

## Posterior Vaginal Wall & Perineal Body Repair A Guide for Women

1. Posterior vaginal wall prolapse
2. What is a posterior repair?
3. Why is surgery performed?
4. How is the surgery performed?
5. What will happen to me before the operation?
6. What will happen to me after the operation?
7. How successful is the operation?
8. Are there any complications?
9. When can I return to my usual routine?

### Posterior vaginal wall prolapse

About 1 in 10 women who have had children require surgery for vaginal prolapse. A prolapse of the back (posterior) wall of the vagina is usually due to a weakness in the strong tissue layer (fascia) that divides the vagina from the lower part of the bowel (rectum). This weakness may cause difficulty when passing a bowel motion, a feeling of fullness or dragging in the vagina or an uncomfortable bulge that extends beyond the vaginal opening. Other names for the weakness of the back wall of the vagina include rectocele and enterocele.

The perineal body (the supporting tissue between vaginal and anal openings) also helps to support the back wall of the vagina. The perineum is the area that is often damaged when tears or episiotomies occur during childbirth. This area may need to be repaired along with the back wall of the vagina to give perineal support and in some cases narrow the vaginal opening.

### What is a posterior repair?

A posterior repair also known as a posterior colporrhaphy is a surgical procedure to repair or reinforce the fascial support layer between the rectum and the vagina. A perineorrhaphy is the term used for the operation that repairs the perineal body.

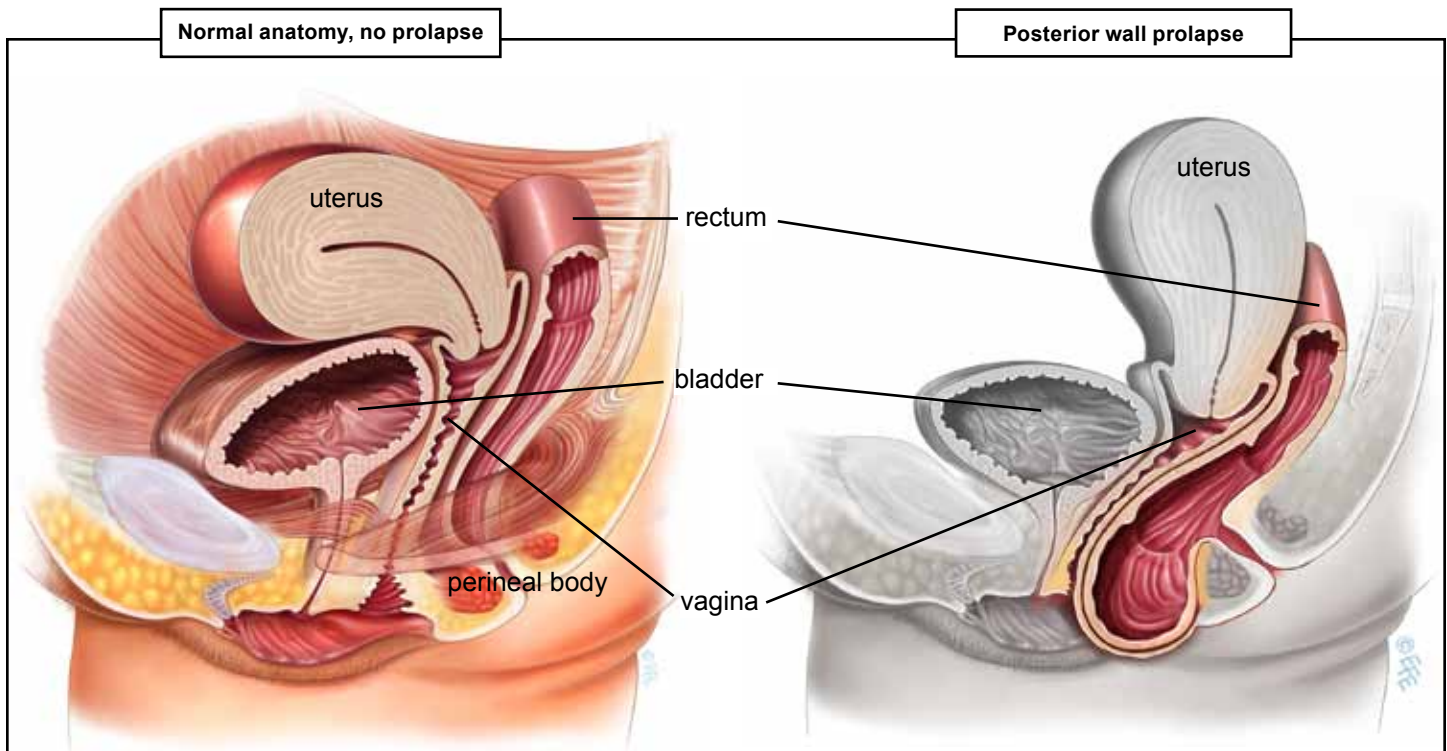
### Why is surgery performed?

The aim of surgery is to relieve the symptoms of vaginal bulge and/or laxity and to improve or maintain bowel function without interfering with sexual function.

### How is the surgery performed?

The surgery can be performed under general, regional or even local anesthetic; your doctor will discuss which is best for you. There are many ways to perform a posterior repair; below is a general description of a common repair method.

- An incision is made along the centre of the back wall of the vagina starting at the entrance and finishing near the top of the vagina.
- The vaginal skin is then separated from the underlying supportive fascial layer. The weakened fascia is then re-



paired using absorbable stitches, these will absorb over 4 weeks to 5 months depending on the type of stitch (suture) material used.

- The perineal body may then be repaired by placing deep sutures into the underlying perineal muscles to build up the perineal body.
- The overlying skin is then closed with absorbable sutures; these dissolve after 4 to 6 weeks and do not need to be removed.
- Sometimes reinforcement material in the form of synthetic (permanent) mesh or biological (absorbable) mesh is used to repair the posterior vaginal wall. Mesh is usually reserved for cases of repeat surgery or severe prolapse.
- A pack may be placed into the vagina and a catheter into the bladder at the end of surgery; if so, this is usually removed after 3 to 48 hours. The pack acts like a compression bandage to reduce vaginal bleeding and bruising after surgery.
- Commonly posterior vaginal repair surgery may also be combined with other surgery such as vaginal hysterectomy, anterior vaginal wall repair or incontinence surgery.

These procedures are covered in detail in other leaflets in this series of Patient Brochures.

### What will happen to me before the operation?

You will be asked about your general health and medication that you are taking. Any necessary investigations (for example, blood tests, ECG, chest x-ray) will be organized. You will also receive information about your admission, hospital stay, operation, pre and postoperative care.

### What will happen to me after the operation?

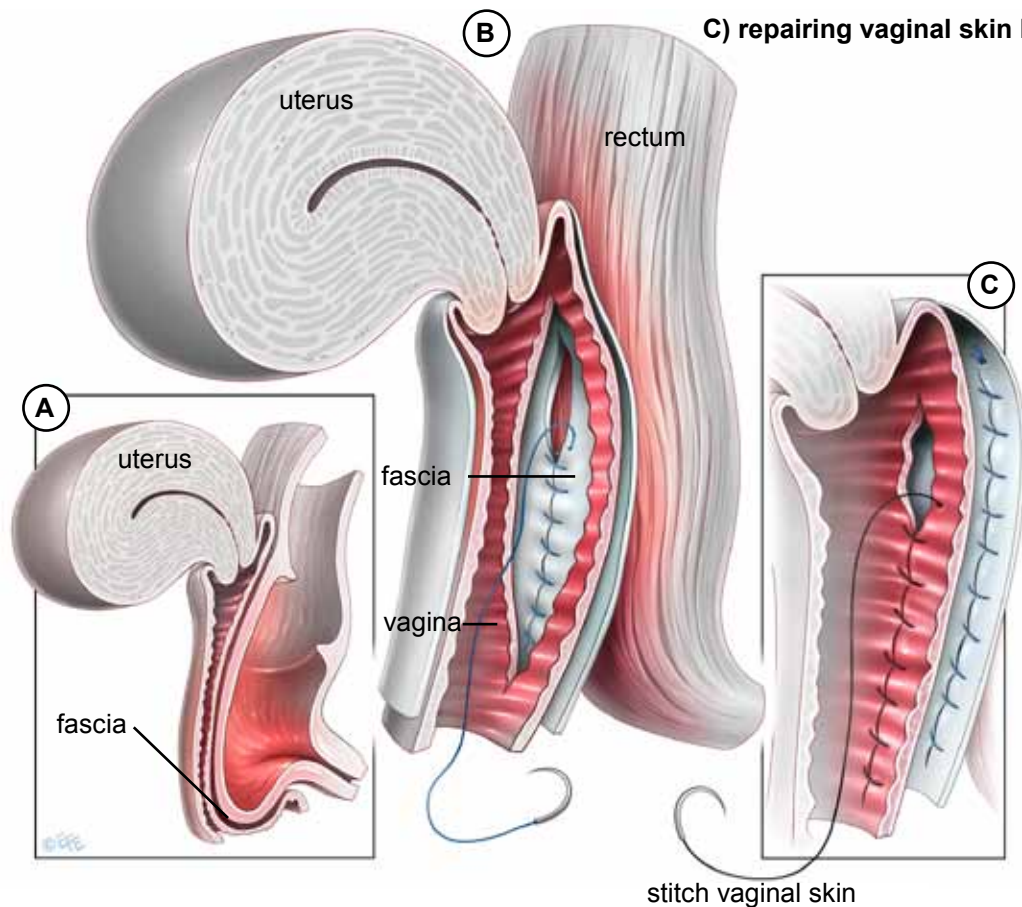
When you wake up from the anesthetic you will have a drip to give you fluids and may have a catheter in your bladder. The surgeon may have placed a pack inside the vagina to reduce any bleeding into the tissues. Both the pack and the catheter are usually removed within 48 hours of the operation.

It is normal to get a creamy discharge for 4 to 6 weeks after surgery. This is due to the presence of stitches in the vagina; as the stitches absorb the discharge will gradually reduce. If the discharge has an offensive odor contact your doctor. You may get some blood stained discharge immediately after surgery or starting about a week after surgery. This blood is usually quite thin and old, brownish looking and is the result of the body breaking down blood trapped under the skin.

### A) posterior vaginal wall prolapse

### B) repairing the fascial layer

### C) repairing vaginal skin layer



### How successful is the surgery?

Quoted success rates for posterior vaginal wall repair is 80-90%. There is a chance that the prolapse might come back in the future, or another part of the vagina may prolapse for which you would need further surgery.

About 50% of women who have symptoms such as incomplete bowel emptying or constipation will have improvement in their symptoms following surgery.

### Are there any complications?

With any operation there is always a risk of complications. The following general complications can happen after any surgery:

- **Anesthetic problems.** With modern anesthetics and monitoring equipment, complications due to anesthesia are very rare.
- **Bleeding.** Serious bleeding requiring blood transfusion is unusual following vaginal surgery (less than 1%)
- **Post operative infection.** Although antibiotics are often given just before surgery and all attempts are made to keep surgery sterile, there is a small chance of developing an infection in the vagina or pelvis.
- **Bladder infections.** (Cystitis) occur in about 6% of women after surgery and are more common if a catheter has been used. Symptoms include burning or stinging when passing urine, urinary frequency and sometimes blood in the urine. Cystitis is usually easily treated by a course of antibiotics.

The following complications are more specifically related to posterior vaginal wall repair:

- **Constipation** is a common postoperative problem and your doctor may prescribe laxatives for this. Try to maintain a high fiber diet and drinking plenty of fluids helps as well.
- Some women develop pain or **discomfort with intercourse.** Whilst every effort is made to prevent this happening, it is sometimes unavoidable. Some women also find intercourse is more comfortable after their prolapse is repaired.
- **Damage to the rectum** during surgery is a very uncommon complication.

### When can I return to my usual routine?

In the early postoperative period you should avoid situations where excessive pressure is placed on the repair, i.e. lifting, straining, vigorous exercise, coughing and constipa-

tion. Maximal strength and healing around the repair occurs at 3 months and care with heavy lifting >10kg/25lbs needs to be taken until this time.

It is usually advisable to plan to take 2 to 6 weeks off work; your doctor can guide you as this will depend on your job type and the exact surgery you have had.

You should be able to drive and be fit enough for light activities such as short walks within 3 to 4 weeks of surgery.

You should wait five to six weeks before attempting sexual intercourse. Some women find using additional lubricant during intercourse is helpful. Lubricants can easily be bought at supermarkets or pharmacies.