

Please contact the Haematology Day ward if you have any questions or concerns or if you are unable to attend this appointment.



**Produced in the
Haematology Day Ward
Updated June 2011**



BONE MARROW BIOPSY

**HAEMATOLOGY DAY
WARD
Level 1
Edmund Hilary Building
Middlemore Hospital
PH 2704718**

NAME:

DATE:

TIME:

WHAT IS A BONE MARROW BIOPSY?

WHAT IS BONE MARROW?

The bone marrow is where the blood cells are made. It contains about one trillion cells, and releases approx 200 billion red cells, 100 billion white cells & 400 billion platelets per day.

WHY THE BIOPSY IS DONE?

To determine if there is a problem with your body's ability to make blood cells. The exact reason would have been explained to you by your Haematologist.

CAN I HAVE BREAKFAST?

Yes

ARE YOU ON ASPIRIN OR WARFARIN?

Please stop taking your **Aspirin** 2 days before procedure.

If you are on **Warfarin** please contact the Day Ward or your Haematologist for instructions.

HOW IS THE BIOPSY DONE?

The biopsy is performed by making a small incision in the skin in the back hip.

A needle retrieves a sample, it is sent to the lab for testing. The biopsy takes about 20 minutes.

Your overall stay is approx 1-2hrs

WILL I BE GIVEN AN ANAESTHETIC?

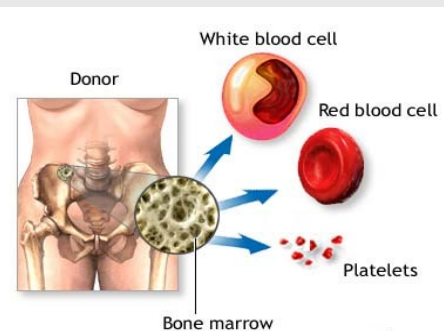
No, however you will be given a relaxant and/or pain relief through a small needle in your hand. This is usually sufficient to help you relax and sometimes people fall off to sleep.

AFTER THE BIOPSY

We prefer you will lie flat after the biopsy for approx 30minutes after the procedure.

The biopsy site will be covered with a clear waterproof dressing. This is to stay in place for 24hours. You can shower with this dressing in place.

Once you are awake and alert, we will remove the needle, and give you a cup of tea.



CAN I DRIVE HOME AFTER THE BIOPSY?

No. You will need to arrange for someone to pick you up. The sedation we give you may impair your judgement for at least 24 hrs.

AFTERCARE

No alcohol, driving, cooking ,or other activities that require clear thinking and quick reactions. You can resume normal activity the following day.

- Take Panadol to relieve any discomfort
- Follow-up appointment will be made for you 2-3 weeks after the biopsy. It can take this time for the results to be available

SEEK ASSISTANCE IF:

- Persistent bleeding , or discomfort at the site.
- Develop a temperature above 38
- Notice redness, swelling or pus at the site.